

Shropshire County Health Profile 2017

Summary Report

Public Health England developed this tool to provide data on the Health of Shropshire at county and UA level including children's and young people's health, adult's health and lifestyle, disease and poor health, life expectancy and causes of death and inequalities indicators, This report is based on 2017 County and UA level data.

Children's & Young People's Health:

Table 1: Public Health England Shropshire Indicators for children's & young people's health 2017

Compared with benchmark ● Better ● Similar ● Worse ○ Not Compared

Indicator	Period	Recent Trend	Count	Shropshire		Region England		England		
				Value	Value	Value	Worst	Range	Best	
Smoking status at time of delivery - current method	2016/17	↓	305	12.4%	11.8%	10.7%	28.1%		2.3%	
Smoking status at time of delivery - historical method	2016/17	—	305	12.4%	11.4%*	10.5%	28.1%		2.3%	
Breastfeeding initiation	2016/17	—	2,019	78.4%	68.9%	74.5%	37.9%		96.7%	
Obese children (Year 6)	2016/17	→	422	16.9%	22.4%	20.0%	29.2%		11.3%	
Hospital stays for alcohol-specific conditions (under 18s)	2014/15 - 16/17	—	48	26.9	28.5	34.2	100.0		6.5	
Under 18 conceptions	2015	↓	93	17.0	23.7	20.8	43.8		5.7	

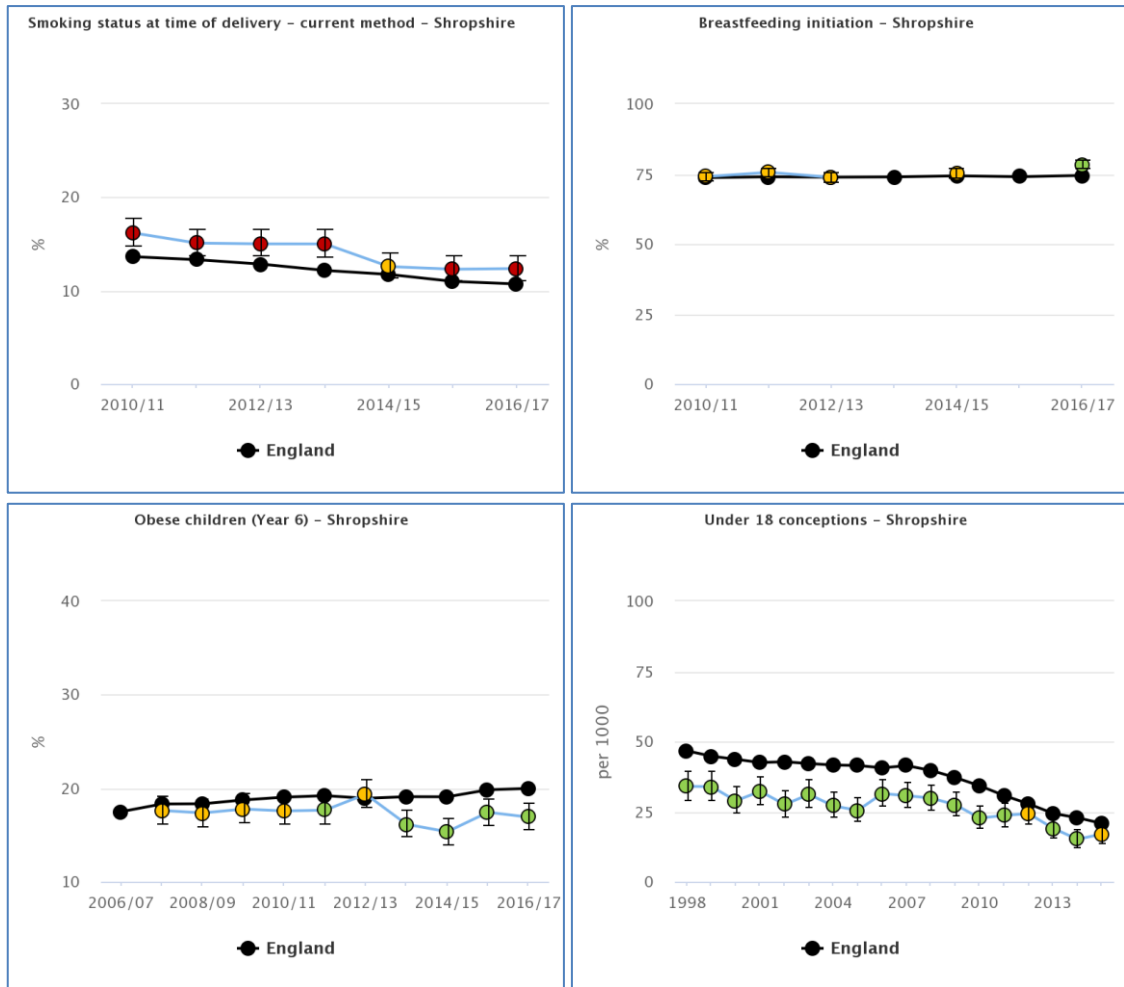
Source: Public Health England Health Profiles 2017

Key Headlines:

- **Smoking status at time of delivery – current method** – Shropshire was significantly worse (12.4%) compared to the national average (10.7%) in 2016/17 and was RAG rated red (see appendix 1).
- **Breastfeeding initiation** – In 2016/17 Shropshire was significantly better (78.4%) compared to the national average (74.5%) and was RAG rated green (see appendix 1).
- **Obese children (Year 6)** - In 2016/17 Shropshire was a significantly better (16.9%) compared to the national average (20%). With trends showing a decrease in Shropshire whilst England is increasing annually (see appendix 1).
- **Under 18 conceptions**– Shropshire had a similar rate (17) of under 18 conceptions to England (20.8) in 2015 and has increased since 2014; the RAG rating has changed from green to amber (see appendix 1).

Appendix 1:

Children's & Young People's Health

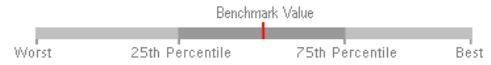


Source: Public Health England Health Profiles 2017

Adult's Health & Lifestyle:

Table 2: Public Health England Shropshire Indicators for adult's health and lifestyle 2017

Compared with benchmark ● Better ● Similar ● Worse ○ Not Compared



Indicator	Period	Shropshire			Region England		England		
		Recent Trend	Count	Value	Value	Value	Worst	Range	Best
Smoking prevalence in adults	2016	-	-	17.2%	15.4%	15.5%	24.2%		7.4%
Percentage of physically active adults - current method	2015/16	-	-	70.6	62.5	64.9	53.9		73.7
Percentage of physically active adults - historical method	2015	-	-	62.2%	55.1%	57.0%	44.8%		69.8%
Excess weight in Adults - current method	2015/16	-	-	59.0%	63.9%	61.3%	73.4%		42.7%
Excess weight in adults - historical method	2013 - 15	-	-	65.2%	66.8%	64.8%	76.2%		46.5%

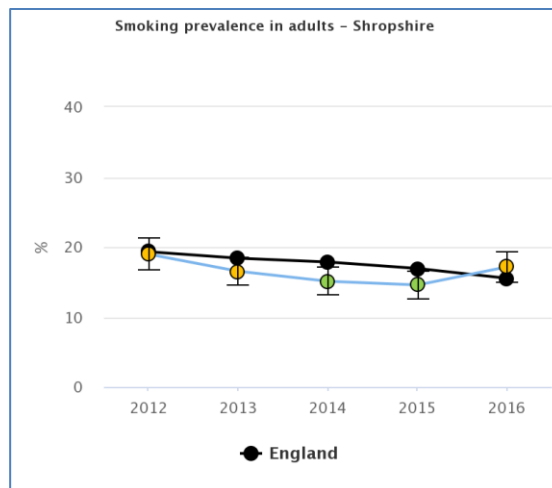
Source: Public Health England Health Profiles 2017

Key Headlines:

- Smoking prevalence in adults** – In 2016 Shropshire (17.2%) was similar to the England average of 15.5% but has increased by 2.6% since 2015 and the RAG rating has changed from green to amber (see appendix 2).

Appendix 2:

Adult's Health & Lifestyle



Source: Public Health England Health Profiles 2017

The remaining indicators have either historical data collection or have only one year's data included.

Disease & Poor Health:

Table 3: Public Health England Shropshire Indicators for disease & poor health 2017

Compared with benchmark ● Better ● Similar ● Worse ○ Not Compared

Indicator	Period	Shropshire			Region England		England			
		Recent Trend	Count	Value	Value	Value	Worst	Range	Best	
Cancer diagnosed at early stage	2015	–	700	51.6%	52.1%	52.4%	41.6%		60.4%	
Hospital stays for self-harm	2016/17	–	415	143.0	189.0	185.3	578.9		50.6	
Hospital stays for alcohol-related harm	2016/17	–	2,188	656	708	636	1,151		388	
Recorded diabetes	2014/15	↑	15,632	6.2%	7.3%	6.4%	8.9%		3.7%	
Incidence of TB	2014 - 16	–	26	2.8	12.7	10.9	69.0		1.3	
New sexually transmitted infections (STI)	2016	↓	656	344	686	795	3,288		344	
Hip fractures in people aged 65 and over	2016/17	–	407	550	588	575	854		365	
Estimated dementia diagnosis rate (aged 65+)	2017	–	3,315	70.4%	65.6%	67.9%	53.8%		90.8%	

Source: Public Health England Health Profiles 2017

Key Headlines:

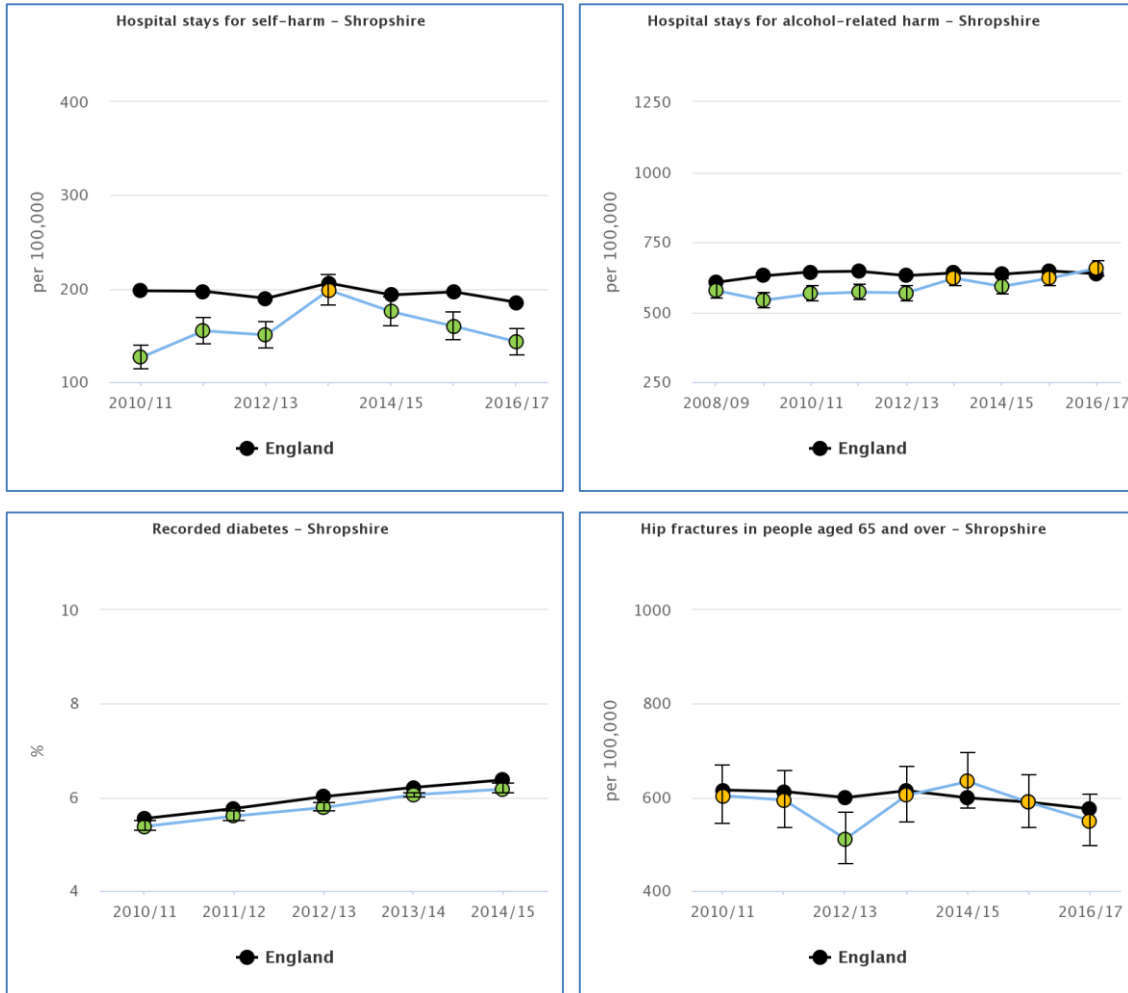
- **Hospital stays for self-harm (per 100,000 population DSR)**- There were significantly better rates for Shropshire (143) in 2016/17 compared to the national average of 185.3. Both the Shropshire and England rates were declining and Shropshire was RAG rated green (see appendix 3).
- **Hospital stays for alcohol-related harm (per 100,000 population DSR)** – In 2016/17 Shropshire rates of 656 were similar to the national average of 636 with local rates on the increase and national rates remaining fairly static. Shropshire’s RAG rating remained in amber (see appendix 3).
- **Recorded diabetes** – Shropshire percentage rates were significantly better (6.2%) in 2014/15 compared to the national average of 6.4% and was RAG rated green (see appendix 3).

The crude rates in Shropshire for both TB and new sexually transmitted infections were significantly better than the England average and have remained fairly static. Both are RAG rated green.

- **Hip fractures in people aged 65 and over (per 100,000 population DSR)** – In 2016/17 the Shropshire rate (550) was similar to the national average of 575 and the RAG rating remains in amber (see appendix 3).

Appendix 3:

Disease & Poor Health



Source: Public Health England Health Profiles 2017

Life Expectancy & Causes of Death:

Table 4: Public Health England Shropshire Indicators for life expectancy & causes of death 2017

Compared with benchmark ● Better ● Similar ● Worse ○ Not Compared

Indicator	Period	Shropshire			Region England		England			
		Recent Trend	Count	Value	Value	Value	Worst	Range	Best	
Life expectancy at birth (Male)	2014 - 16	-	-	80.5	78.8	79.5	74.2		83.7	
Life expectancy at birth (Female)	2014 - 16	-	-	83.7	82.7	83.1	79.4		86.8	
Infant mortality	2014 - 16	-	27	3.1	6.0	3.9	7.9		1.6	
Killed and seriously injured on roads	2014 - 16	-	460	49.2	37.1	39.7	71.3		13.5	
Suicide rate	2014 - 16	-	64	7.8	10.0	9.9	18.3		6.1	
Smoking related deaths	2014 - 16	-	1,528	233.3	270.7	272.0	499.3		162.5	
Under 75 mortality rate: cardiovascular	2014 - 16	-	616	63.6	78.0	73.5	141.3		45.6	
Under 75 mortality rate: cancer	2014 - 16	-	1,248	129.0	141.9	136.8	195.3		100.0	
Excess winter deaths	Aug 2013 - Jul 2016	-	630	20.7	18.3	17.9	28.9		7.4	

Source: Public Health England Health Profiles 2017

Key Headlines

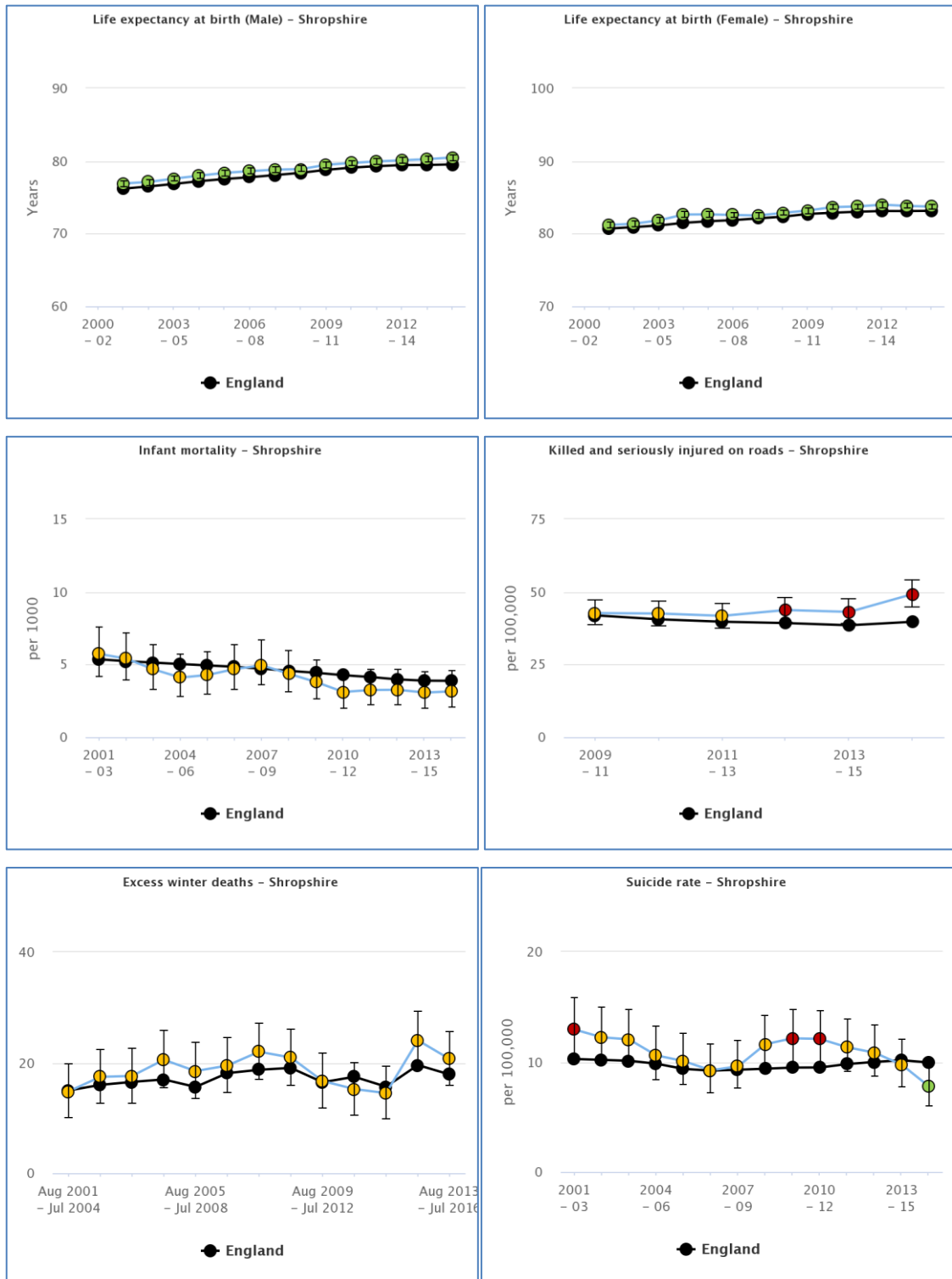
- Life expectancy at birth (Years) – Male and Female.** Life expectancy for both males and females in Shropshire in the period 2014/16 was significantly better than England: Males in Shropshire – 80.5 years and England 79.5 years; females in Shropshire 83.7 years and England 83.1 years. Both local and national trends were increasing and were RAG rated green (see appendix 4).
- Infant Mortality (Crude rate per 1000 population)** – Infant mortality rates have been decreasing both locally and nationally and Shropshire rates (3.1) were similar to the national average of 3.9 in the period 2014-16; and Shropshire's RAG rating remains amber (see appendix 4).
- Killed and seriously injured on roads (Crude rate per 100,000 population)** – In the period 2014/16 Shropshire had significantly worse rates (49.2) compared to the national average of 39.7. Both the local and national rates have increased since 2013/15 (see appendix 4).
- Suicide rate (Per 100,000 population DSR):** In the period 2014/16 Shropshire's suicide rate of 7.8 was significantly better than the national rate of 9.9 and has been decreasing since 2010/12. The RAG rating for Shropshire changed from amber to green in the period 2014/16.

Shropshire trends for deaths from smoking and mortality rates in the under 75s for cardiovascular and cancer were all significantly better than the national average and are decreasing in line with the national trend and were RAG rated green.

- Excess Winter Deaths (Ratio):** In the period 2013/16 the Shropshire ratio (20.7) of excess winter deaths was similar to the national average of 17.9 and were RAG rated amber.

Appendix 4:

Life Expectancy & Causes of Death

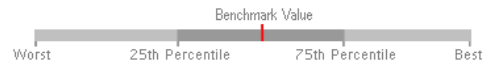


Source: Public Health England Health Profiles 2017

Inequalities Indicators:

Table 5: Public Health England Shropshire inequalities indicators for 2017

Compared with benchmark ● Better ● Similar ● Worse ○ Not Compared



Indicator	Period	Shropshire			Region England		England			
		Recent Trend	Count	Value	Value	Value	Worst	Range	Best	
Inequality in life expectancy at birth LA (Male)	2014 - 16	-	-	3.7	-	-	-	-	-	-
Inequality in life expectancy at birth LA (Female)	2014 - 16	-	-	2.5	-	-	-	-	-	-
The percentage of people resident in the area living in each national deprivation quintile	2015	-	-	-	-	-	-	-	-	-
Premature mortality from all causes (Male)	2014 - 16	-	1,650	355	434	405	677			263
Premature mortality from all causes (Female)	2014 - 16	-	1,168	239	280	266	436			180
Per cent of ethnic minorities (Female)	2015	-	1,600	1.3%	16.2%	13.4%	0.7%			62.2%
Per cent of ethnic minorities (Male)	2015	-	1,400	1.1%	16.2%	13.1%	0.8%			60.9%
Dependency ratio	2015	-	128,656	70.4%	63.3%	60.7%	33.9%			83.2%

Source: Public Health England Health Profiles 2017

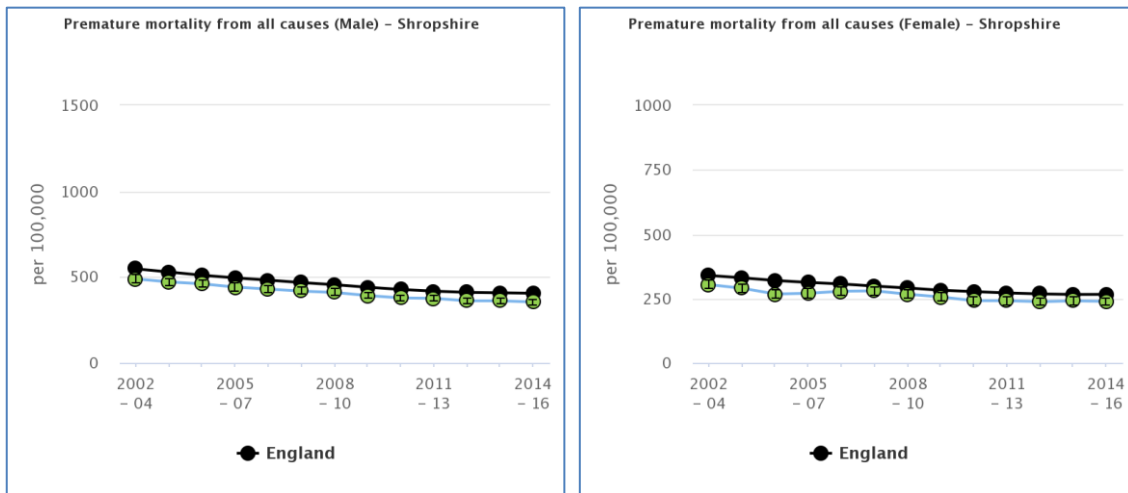
Key Headlines:

- Premature mortality for all causes male and female (Per 100,000 population DSR) - Both male and female premature mortality for all causes in Shropshire in the period 2014/16 was significantly better than England: Males in Shropshire – 355 and England - 405 and females in Shropshire 239 and England 266. Both local and national mortality trends were decreasing and were RAG rated green (see appendix 5).**

The remaining indicators could not be compared.

Appendix 5

Inequalities Indicators:



Source: Public Health England Health Profiles 2017