

Information on Breastfeeding in Shropshire County at 6-8 Weeks

A decorative graphic consisting of several overlapping, semi-transparent blue and grey geometric shapes, resembling a stylized map or a series of connected polygons, located at the bottom of the page.

2015-16

Information on Breastfeeding in Shropshire County 2015-16 at 6-8 weeks

The following report includes information on breastfeeding activity by age of mother, deprivation, LA districts, CCGs, rurality and place plan areas within Shropshire County in 2015/16 at 6-8 weeks.

Table 1: Breastfeeding Status for Shropshire 2015/2016

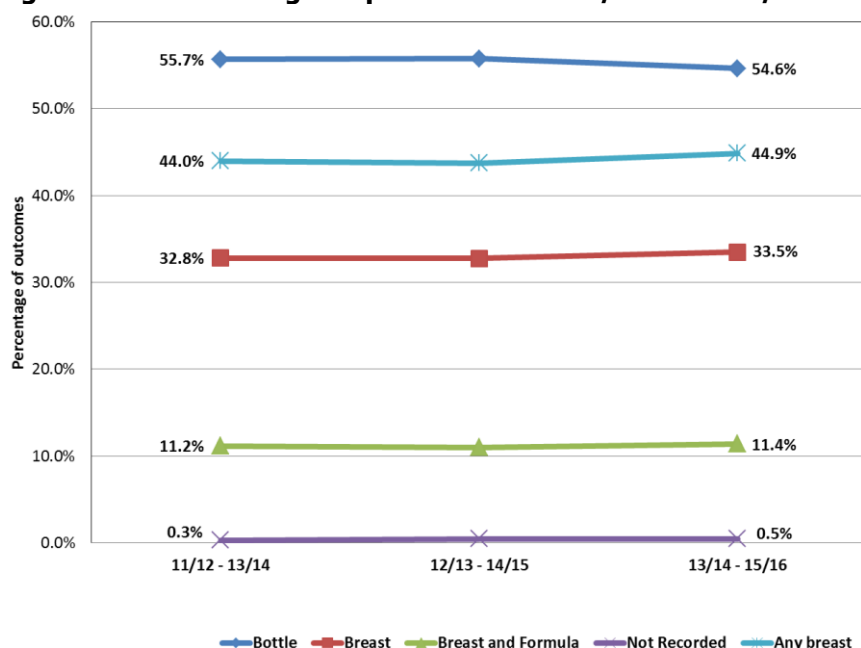
Method	Number	%	95% Confidence Interval			
			LL	UL	LSE	USE
Bottle	1427	53.0%	51.1%	54.9%	1.9%	1.9%
Breast	921	34.2%	32.4%	36.0%	1.8%	1.8%
Breast and Formula	325	12.1%	10.9%	13.4%	1.2%	1.3%
Not Recorded	20	0.7%	0.5%	1.1%	0.3%	0.4%
Any breast	1246	46.3%	44.4%	48.2%	1.9%	1.9%
Grand Total	2693					

Source: Child Health Surveillance System, Shropshire Community Health NHS Trust, 2015/16

The above table indicates the method and rates of breastfeeding by Shropshire mothers between 2015/16 at 6-8 weeks. Significantly more babies were bottle rather than breast fed, and 'any breastfeeding' (breast and breast formula combined) is significantly lower than those only bottle fed.

Figure 1 indicates the 3-year rolling trend comparator for Shropshire at 6-8 weeks between 2011/12 and 2015/16 and shows that there were significantly more babies bottle fed than breast in all years. There was a slight decrease in bottle feeding and a slight percentage increase in breast & formula feeding, any breast and breast feeding in 2013/14-2015/16 compared to the previous rolling 3-years but this was not significant.

Figure 1 Breastfeeding comparators for 2011/12 to 2015/16 – 3-year rolling

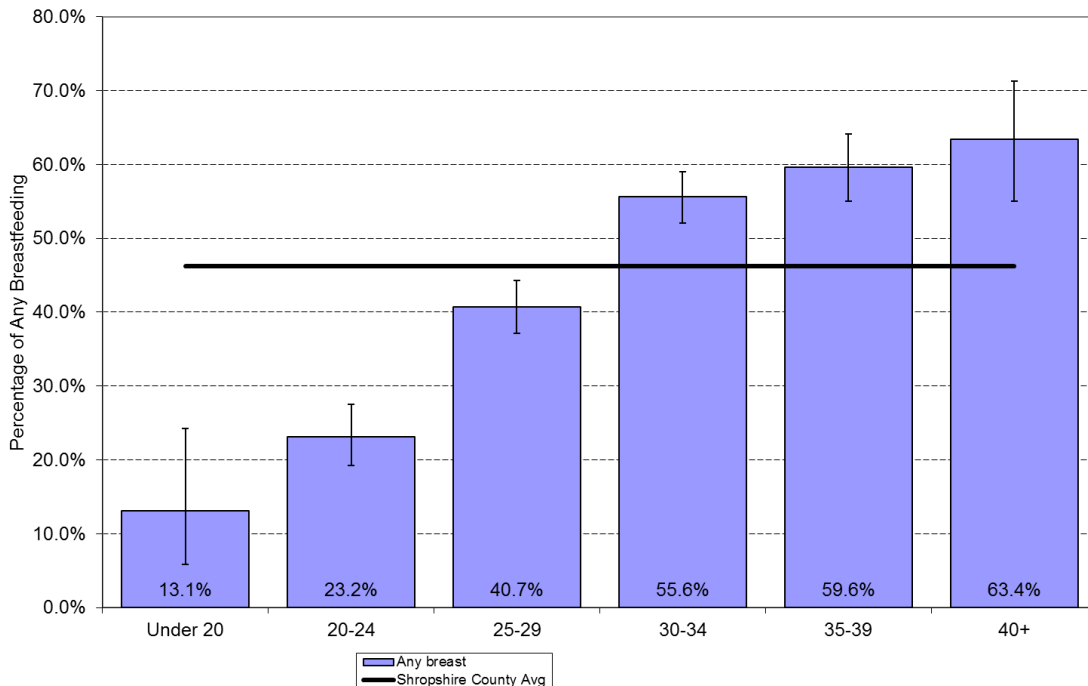


Source: Child Health Surveillance System, Shropshire Community Health NHS Trust 2011/12-2015/16

Breast feeding trends by age of mother

Figure 2 shows 'any breastfeeding' activity for Shropshire County which is comprised of breast and breast and formula combined and is derived from the Child Health Surveillance System.

Figure 2: Any breast feeding by age of mother in Shropshire County 2015/16



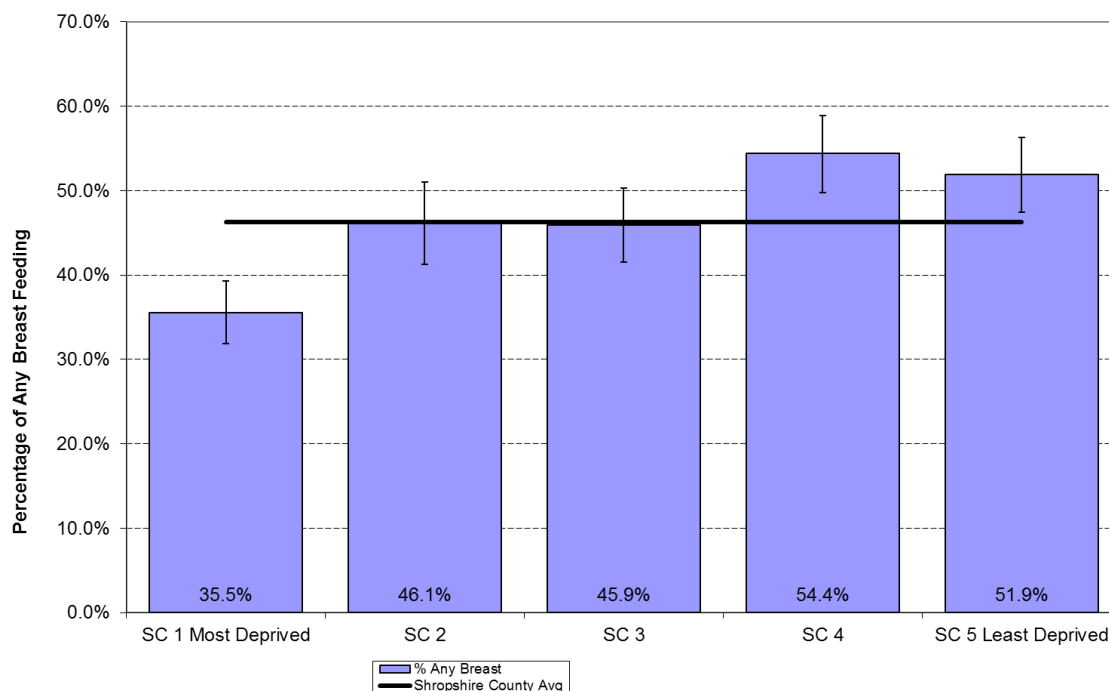
Source: Child Health Surveillance System, Shropshire Community Health NHS Trust, 2015/16

There were significantly lower 'any breastfeeding' rates in mothers aged 29 and under with only 13.1% of mothers under the age of 20 participating in 'any breastfeeding'; this was however an increase of 2.7% compared to 2014/15 but well below the Shropshire average of 46.3%. Mothers aged 30 and above were significantly more likely to 'any' breastfeed and were significantly above the Shropshire average with the highest percentage in those aged 40+.

Deprivation

The following chart shows that significantly fewer mothers from the most deprived fifth of Shropshire's population actively participated in 'any breastfeeding' at a percentage rate of 35.5%; a 1.7% increase compared to the previous year but well below the Shropshire average of 46.3%. Compared to 2014-15 there were slight percentage decreases in quintiles 2 and 3 and a slight increase in the other quintiles but this was not significant; however quintiles SC4 and SC5 were significantly higher than the Shropshire average. There was a 16.4% inequalities gap between the most and least deprived quintiles which was a 1% improvement compared to 2014/15.

Figure 3: Any breastfeeding by deprivation in Shropshire 2015/16

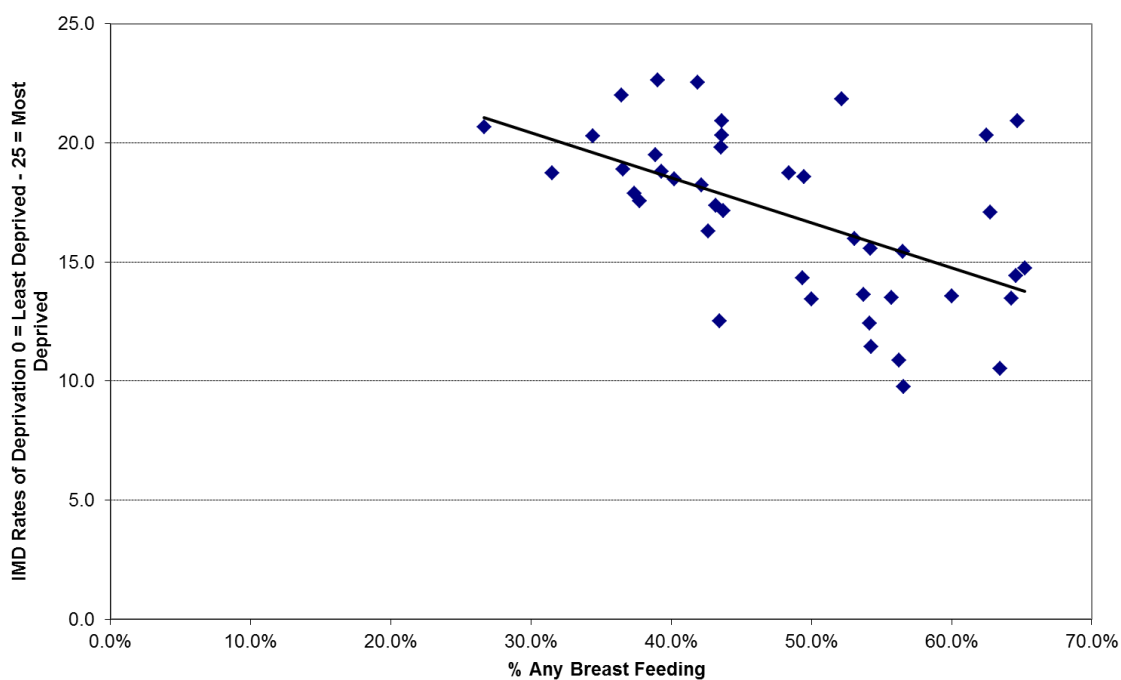


Source: Child Health Surveillance System, Shropshire Community Health NHS Trust, 2015/16

Any breastfeeding by deprivation by GP Practices in Shropshire

The trend line in Figure 4 indicates that GP Practices in the more deprived areas had a lower rate of 'any breastfeeding' (breast and breast & formula combined) compared with those in the lesser deprived areas at 6-8 weeks.

Figure 4: Any breastfeeding by deprivation by GP Practices in Shropshire 2015/16

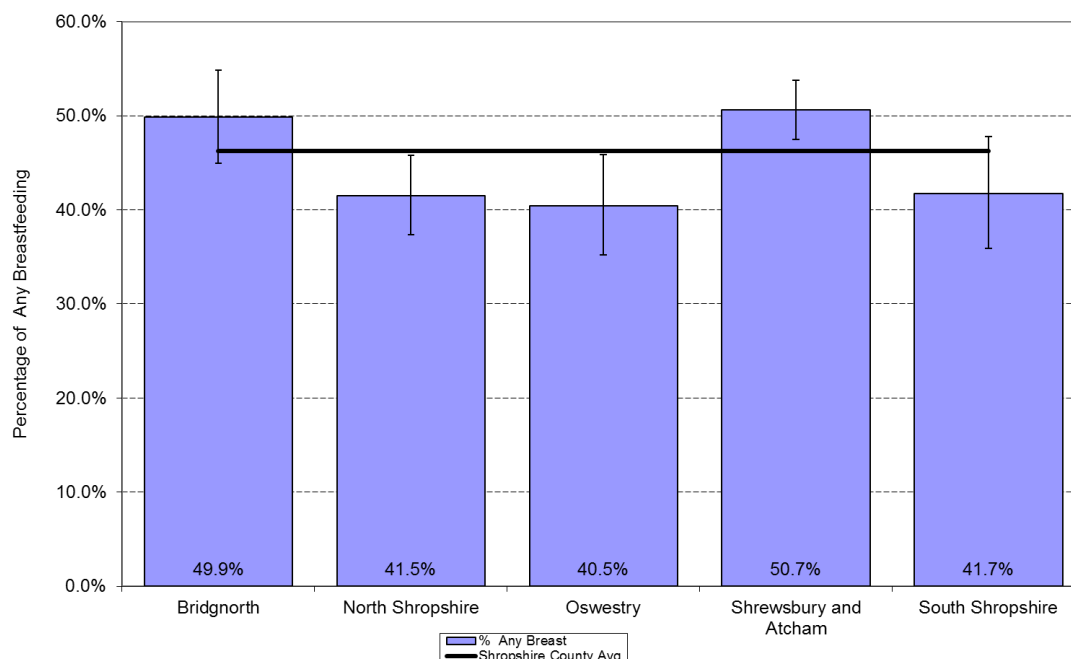


Source: Child Health Surveillance System, Shropshire Community Health NHS Trust, 2015/16

Geographical Areas - District

'Any Breastfeeding' in North Shropshire and Oswestry were statistically similar but were significantly lower than the remaining LA areas and significantly below the Shropshire average of 46.3%. Compared to 2014/15, there were percentage increases in any breastfeeding in Bridgnorth, Shrewsbury & Atcham and Oswestry and slight decreases in North Shropshire and South Shropshire but none of these were significant.

Figure 5: Any breastfeeding by district in Shropshire County 2015/16



Source: Child Health Surveillance System, Shropshire Community Health NHS Trust, 2015/16

Clinical Commissioning Group Areas

Table 2 indicates that the 'any breast feeding' rates were significantly lower in North Shropshire compared to either Central or South Shropshire and was significantly below the Shropshire average of 46.3%.

Table 2: Any breastfeeding by CCG in Shropshire County 2015/16

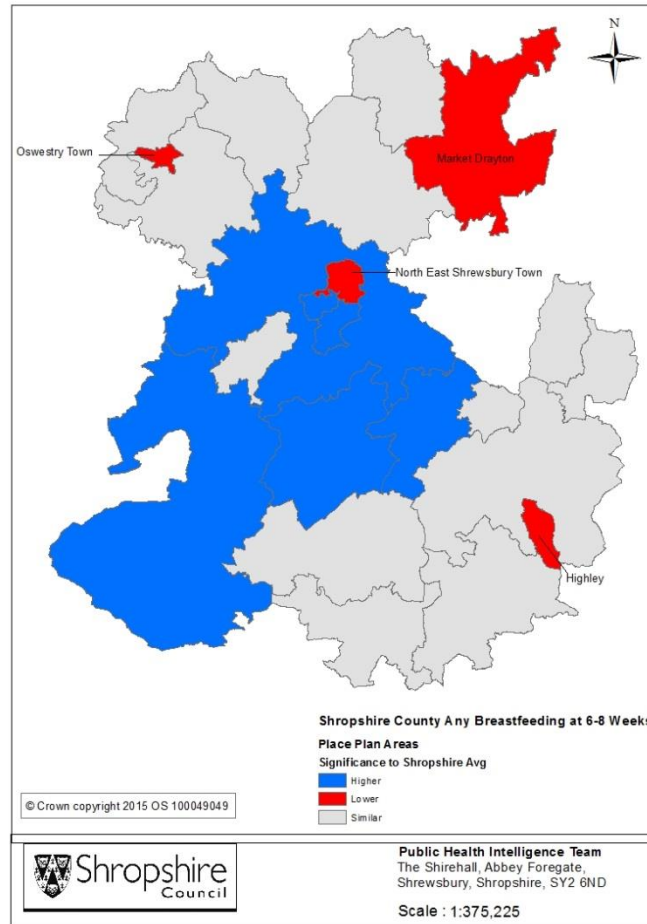
District	Any Breast	% Any breast	LL	UL
North Shropshire	365	41.1%	37.8%	44.4%
Central Shropshire	503	50.7%	47.5%	53.8%
South Shropshire	319	46.6%	42.8%	50.4%

Source: Child Health Surveillance System, Shropshire Community Health NHS Trust, 2015/16

Place plan Areas

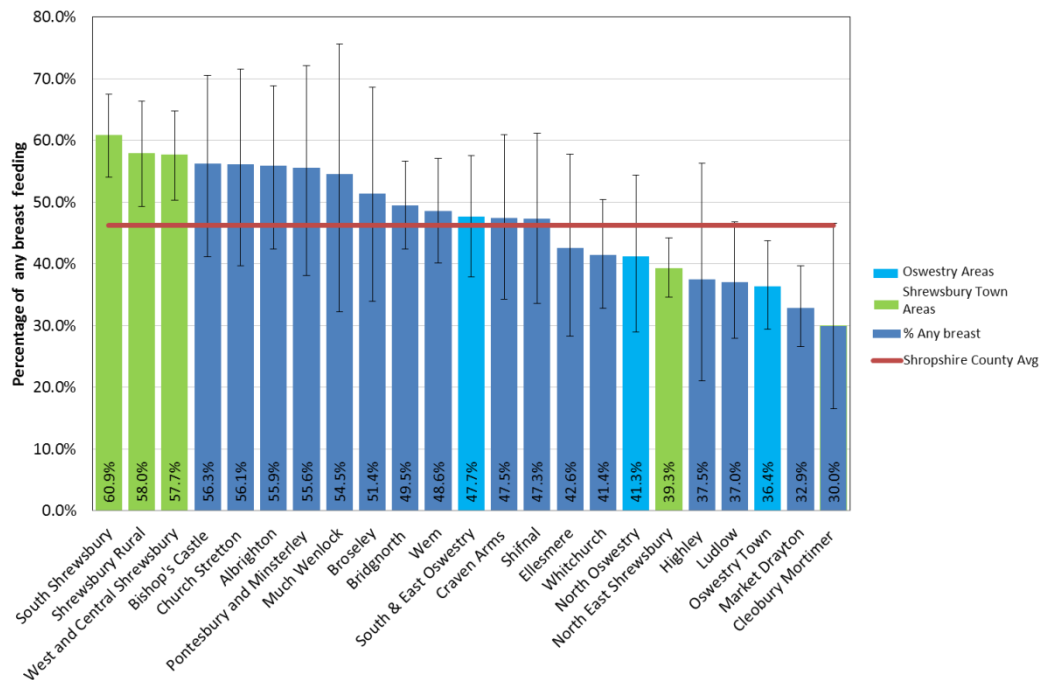
The following map shows that over a 3-year period, the place plan areas which were significantly below the Shropshire average for 'any breastfeeding' were Market Drayton, Oswestry Town, North East Shrewsbury Town and Highley. The remainder were either higher or similar to the Shropshire average of 44.9%.

Figure 6: Any breastfeeding by place plan areas - 3-year rolling 2014-16



Source: Child Health Surveillance System, Shropshire Community Health NHS Trust, 2014-16

Figure 7: Any breastfeeding by place plan areas in Shropshire County 2015/16

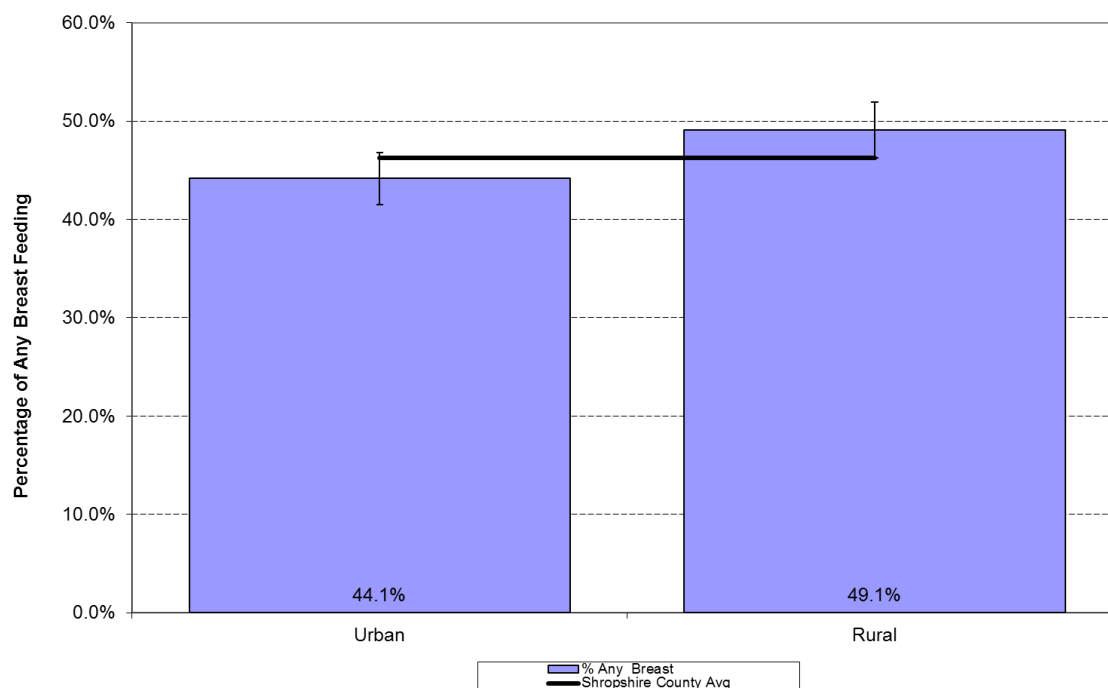


Source: Child Health Surveillance System, Shropshire Community Health NHS Trust, 2015/16

Figure 7 shows that South Shrewsbury had the highest percentage of any breastfeeding in 2015-16 and was similar to the majority of the other place plan areas except for North East Shrewsbury, Ludlow, Oswestry Town, Market Drayton, Cleobury Mortimer and Whitchurch. South Shrewsbury, Shrewsbury Rural and West & Central Shrewsbury were all above Shropshire Average of 46.3%, whilst NE Shrewsbury, Oswestry Town and Market Drayton were significantly below.

Rurality

Figure 8: Any breastfeeding by rurality in Shropshire County 2015/16



Source: Child Health Surveillance System, Shropshire Community Health NHS Trust, 2015/16

Figure 8 shows similar rates for 'any breastfeeding' at 6-8 weeks for both rural areas and urban areas and both were similar to the Shropshire average of 46.3%.

Summary

- Overall 'any breastfeeding' (breast and breast formula combined) was significantly lower than those only bottle fed at the 6-8 week period.
- Over a 3-year rolling period, there was a small percentage increase in breast & formula, breast and any breast feeding in 2014/15-2015/16 compared to the previous year; however there was a significantly higher percentage of bottle fed babies compared to all other methods in all years.
- There were significantly lower 'any breastfeeding' rates in mothers aged 29 and under; well below the Shropshire average of 46.3%. Mothers aged 30+ were significantly more likely to breastfeed with the greatest rates of any breastfeeding in mothers aged 40+.
- Significantly fewer mothers from the most deprived fifth of Shropshire's population actively participated in 'any breastfeeding' compared to mothers from less deprived areas, with an inequalities gap of 16.4% between the most and least deprived quintiles.

- GP practices in the most deprived areas had lower rates of 'any breastfeeding' initiatives.
- North Shropshire and Oswestry were similar to each other but significantly lower than both the remaining LA areas and the Shropshire average.
- Significantly lower 'any breastfeeding' rates in North Shropshire compared to either of the other 2 CCG areas and significantly lower than the Shropshire average.
- Over a 3-year rolling period, Market Drayton, Oswestry Town, North East Shrewsbury Town and Highley were significantly below both the Shropshire average and the remaining place plan areas.
- In 2015-16 South Shropshire had the highest percentage of any breastfeeding and was similar to the majority of place plans except for North East Shrewsbury, Ludlow, Oswestry Town, Market Drayton, Cleobury Mortimer and Whitchurch which were significantly lower.
- There were similar rates of 'any breastfeeding' in both urban and rural areas and both were similar to the Shropshire average.

