

Information on Learning Disabilities and Autistic Spectrum Disorder in Adults in Shropshire 2017

Learning Disability

The World Health Organisation defines learning disabilities as 'a state of arrested or incomplete development of mind'. Somebody with a learning disability is said also to have 'significant impairment of intellectual functioning' and 'significant impairment of adaptive / social functioning'. This can cause difficulty understanding, learning and remembering new things, and in generalising any learning to new situations.

Because of these difficulties with learning the person may have difficulties with a number of social tasks, for example communication, self-care, awareness of health and safety. A final dimension to the definition is that impairments are present from childhood, not acquired as a result of accident or following the onset of adult illness.

The words, mild, moderate, severe and profound are also used with learning disability. In the UK, the Department of Health has used the terms moderate, severe and profound¹. These have been linked to IQ test scores. Learning disabilities in the UK are classified with the following definitions based on IQ score:

- 50-70 - Mild
- 35-50 - Moderate
- 20-35 - Severe
- less than 20 – Profound

Prevalence of learning disability

Public Health England's report of '*People with Learning Disabilities in England 2015*' estimated that nationally there are around 1,087,100 people with learning disabilities in England; approximately 170,975 children (0-17) and 930,400 adults (18+) of whom 252,446 (23%) are known to learning disability services.

Up until 2013 to 2014, QoF learning disability registers included only people aged 18 or over. In 2014 to 2015, their scope was officially expanded to cover people with learning disability of all ages. However, it is apparent that the completeness of GPs recording of learning disabilities in children and young people is less complete than for adults.

Locally Quality and Outcomes Framework (QoF) data for 2015-16 states that the prevalence of learning disability on GP practice registers is 0.53% which accounts for 1,610 of the population in Shropshire. Nationally the QoF data prevalence of learning disability is lower at 0.46% of the population (263,588 people). However, QoF data only includes people registered as having learning disabilities and is most likely to include people with moderate to profound learning disabilities.

Forecasts of learning disability

The following table 1 shows predictions for the numbers of people aged 18-64 and over 65 with a moderate or severe learning disability in Shropshire and in England.

There is predicted to be a 4.9% reduction in the number of people aged 18-64 for Shropshire in the next 18 years, compared to a 5% increase in the national figure. In the over 65s Shropshire is predicted to see an increase to 37.6% during this time period, which is lower than the national predicted increase of 38.1%. The number of people in this age group is far smaller compared to the under 65 year age group, but is predicted to increase which reflects the general increase in the ageing population experienced both locally and nationally.

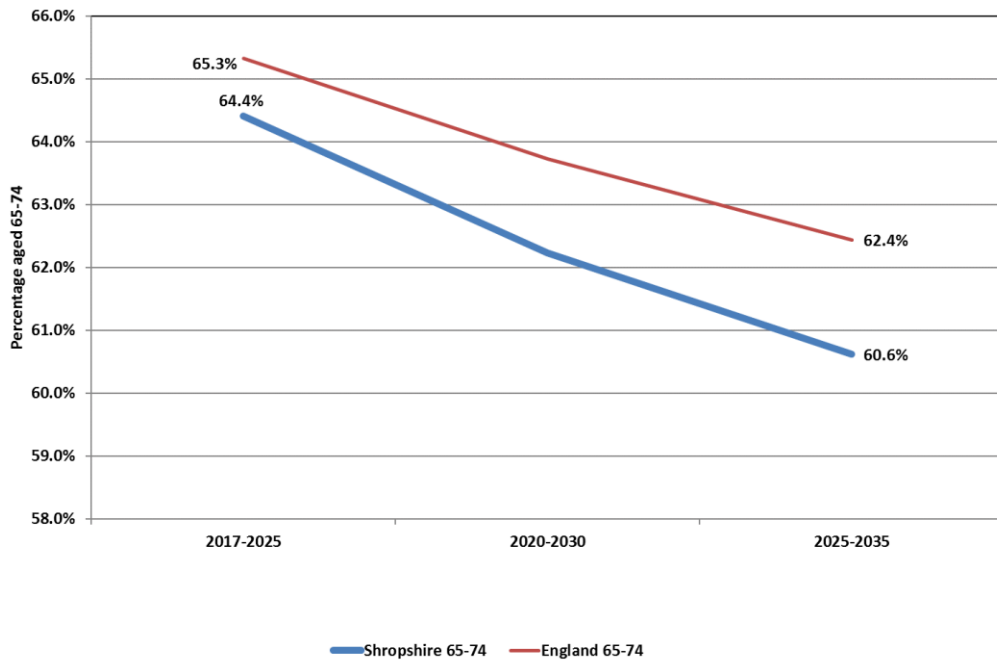
Table 1: Predictions for moderate and severe learning disabilities (people aged 18-64 and 65+ years)

Shropshire	2017		2020		Number % Difference from 2017	2025			2030			2035		
	Number	% of Total	Number	% of Total		Number	% of Total	Number % Difference from 2017	Number	% of Total	Number % Difference from 2017	Number	% of Total	Number % Difference from 2017
18-24	134	13.6%	123	12.6%	-8.2%	119	12.3%	-11.2%	130	13.6%	-3.0%	129	13.8%	-3.7%
25-34	182	18.5%	187	19.2%	2.7%	179	18.5%	-1.6%	165	17.3%	-9.3%	167	17.9%	-8.2%
35-44	208	21.2%	206	21.1%	-1.0%	221	22.9%	6.3%	234	24.6%	12.5%	228	24.4%	9.6%
45-54	245	24.9%	231	23.7%	-5.7%	202	20.9%	-17.6%	196	20.6%	-20.0%	211	22.6%	-13.9%
55-64	214	21.8%	229	23.5%	7.0%	244	25.3%	14.0%	228	23.9%	6.5%	200	21.4%	-6.5%
18-64 Total	983		976		-0.7%	965		-1.8%	953		-3.1%	935		-4.9%
65-74	145	68.1%	147	65.3%	1.4%	146	60.6%	0.7%	165	61.1%	13.8%	177	60.4%	22.1%
75-84	50	23.5%	58	25.8%	16.0%	71	29.5%	42.0%	74	27.4%	48.0%	75	25.6%	50.0%
85+	18	8.5%	20	8.9%	11.1%	24	10.0%	33.3%	31	11.5%	72.2%	41	14.0%	127.8%
65+ Total	213		225		5.6%	241		13.1%	270		26.8%	293		37.6%
All 18-65+	1196		1201			1206			1223			1228		
England														
18-24	30,370	16.2%	29,305	15.5%	-3.5%	29,506	15.4%	-2.8%	32,998	16.9%	8.7%	33,727	17.1%	11.1%
25-34	40,967	21.8%	41,588	22.0%	1.5%	40,973	21.4%	0.0%	39,011	20.0%	-4.8%	40,283	20.5%	-1.7%
35-44	43,629	23.3%	44,625	23.6%	2.3%	47,295	24.7%	8.4%	48,859	25.1%	12.0%	48,381	24.6%	10.9%
45-54	40,649	21.7%	39,425	20.8%	-3.0%	37,472	19.5%	-7.8%	38,519	19.8%	-5.2%	40,990	20.8%	0.8%
55-64	31,893	17.0%	34,343	18.1%	7.7%	36,614	19.1%	14.8%	35,431	18.2%	11.1%	33,481	17.0%	5.0%
18-64 Total	187,508		189,286		0.9%	191,860		2.3%	194,818		3.9%	196,862		5.0%
65-74	19,262	67.8%	19,636	66.2%	1.9%	20,003	62.3%	3.8%	22,612	63.0%	17.4%	24,345	62.1%	26.4%
75-84	6,667	23.5%	7,350	24.8%	10.2%	8,958	27.9%	34.4%	9,435	26.3%	41.5%	9,868	25.2%	48.0%
85+	2,465	8.7%	2,662	9.0%	8.0%	3,164	9.8%	28.4%	3,867	10.8%	56.9%	4,987	12.7%	102.3%
65+ Total	28,394		29,648		4.4%	32,125		13.1%	35,914		26.5%	39,200		38.1%
All 18-65+	215,902		218,934			223,985			230,732			236,062		

Source: www.pansi.org.uk

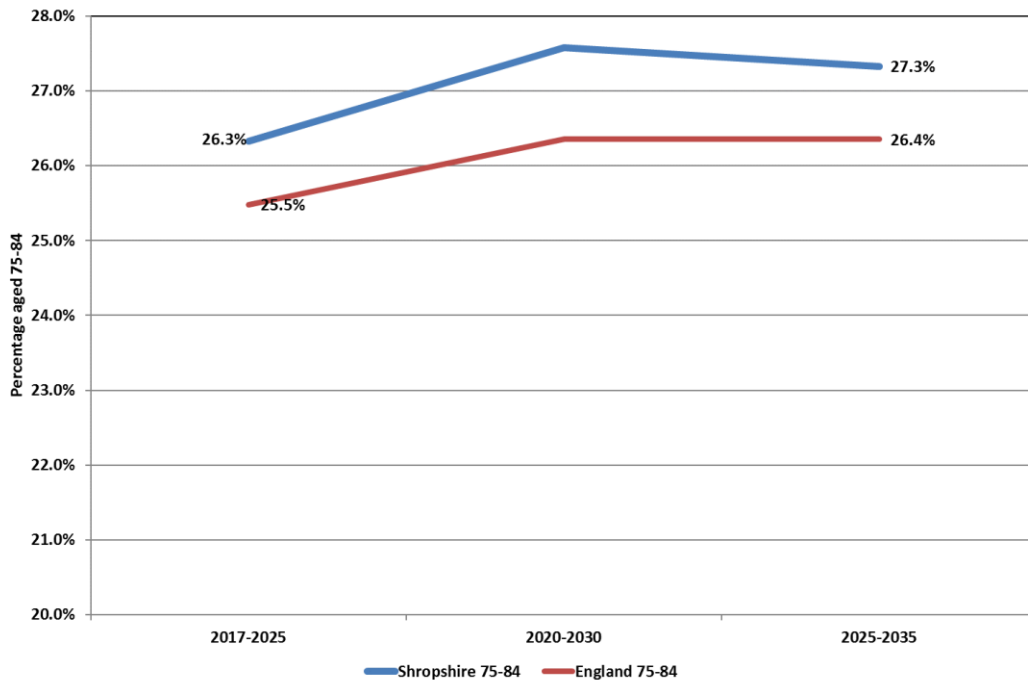
Figure 1 indicates that for people in the 65-74 age band, the trend is predicted to decrease in Shropshire County by 3.8% in 2035 compared to 2017; falling by 1.8% below the England average. However figure 2 shows that in the 75-84 age band, the percentage of people with moderate to severe learning disabilities is considerably lower but the overall trend is reversed with the percentage in Shropshire County increasing by 1% in 2035 compared to 2017 and rising 0.9% above the England average.

Figure 1: Percentage of people aged 65-74 with moderate to severe learning disabilities - 3-year rolling trend 2017-2035



Source: www.pansi.org.uk

Figure 2: Percentage of people aged 75-84 with moderate to severe learning disabilities - 3-year rolling trend 2017-2035



Source: www.pansi.org.uk

Autistic Spectrum Disorder

Autism is a lifelong developmental disability. It is part of the autism spectrum and is sometimes referred to as an autism spectrum disorder, or an ASD. The word 'spectrum' is used because, while all people with autism share three main areas of difficulty, their condition will affect them in very different ways. Some are able to live relatively 'everyday' lives; others will require a lifetime of specialist support. ⁱⁱ

The three main areas of difficulty which all people with autism share are sometimes known as the 'triad of impairments'. They are:

- difficulty with social communication
- difficulty with social interaction
- difficulty with social imagination.

Prevalence of ASD

The latest prevalence studies of autism indicate that 1.1% of the population in the UK may have autism. This means that over 700,000 people in the UK may have autism, an estimate derived from the 1.1% prevalence rate applied to the 2011 UK census figures. ⁱⁱⁱ

It is estimated that between 31% and 35.4% of people with a learning disability (IQ less than 70) also have autism.

Table 2 predicts that the percentage of adults (18-64) with ASD in Shropshire will fall by 6.5% by 2035 compared to 2017 whilst the England figure is predicted to rise to 4.4% by 2035.

Table 2: Predictions for Autistic Spectrum Disorder (people aged 18-64 years)

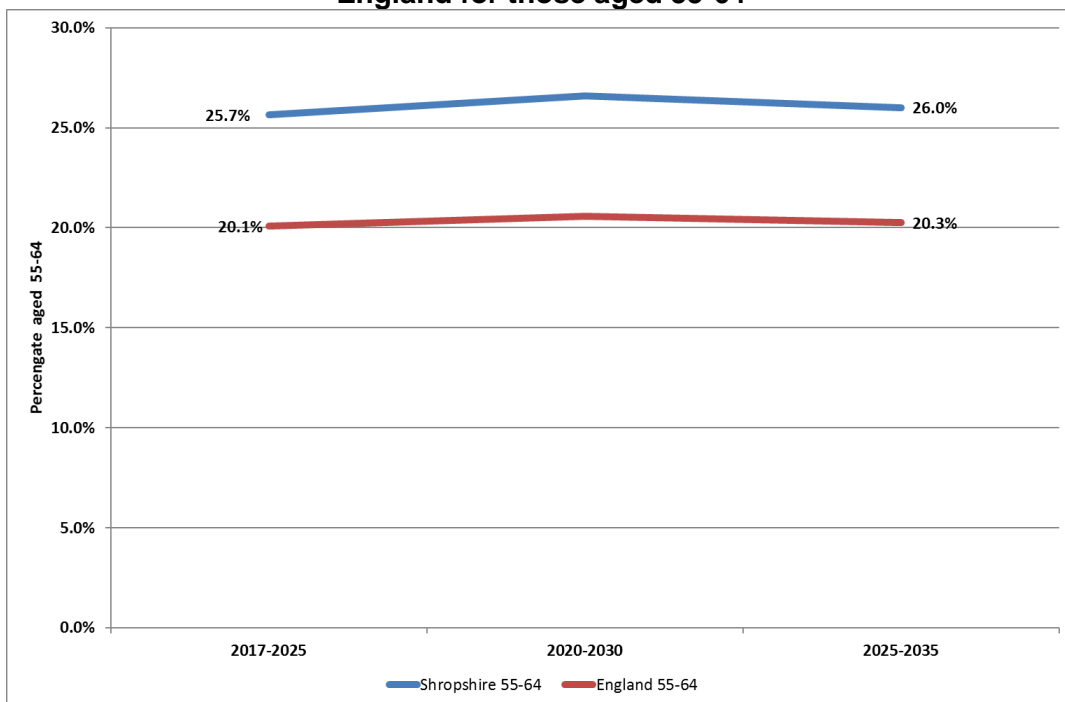
Shropshire	2017		2020			2025			2030			2035			
	Age Band	Number	% of Total	Number	% of Total	% Difference from 2017	Number	% of Total	% Difference from 2017	Number	% of Total	% Difference from 2017	Number	% of Total	% Difference from 2017
	18-24	227	12.5%	207	11.5%	-8.8%	201	11.3%	-11.5%	216	12.4%	-4.8%	216	12.7%	-5.1%
	25-34	358	19.7%	368	20.4%	2.8%	352	19.7%	-1.7%	322	18.5%	-10.1%	326	19.1%	-9.8%
	35-44	333	18.4%	332	18.4%	-0.3%	359	20.1%	7.8%	380	21.9%	14.1%	370	21.7%	10.0%
	45-54	466	25.7%	435	24.1%	-6.7%	377	21.1%	-19.1%	359	20.7%	-23.0%	386	22.7%	-20.7%
	55-64	429	23.7%	461	25.6%	7.5%	495	27.7%	15.4%	460	26.5%	7.2%	404	23.7%	-6.2%
	18-64 Total	1,813		1,802		-0.6%	1,784		-1.6%	1,738		-4.1%	1,703		-6.5%
England															
	18-24	49,621	14.7%	47,797	14.0%	-3.7%	47,642	13.8%	-4.0%	53,041	15.2%	6.9%	54,045	15.3%	8.9%
	25-34	77,029	22.8%	78,792	23.1%	2.3%	78,409	22.7%	1.8%	74,857	21.5%	-2.8%	77,307	22.0%	0.4%
	35-44	70,314	20.9%	71,758	21.1%	2.1%	75,935	22.0%	8.0%	79,048	22.7%	12.4%	78,696	22.3%	11.9%
	45-54	76,519	22.7%	73,942	21.7%	-3.4%	69,629	20.2%	-9.0%	70,547	20.2%	-7.8%	74,720	21.2%	-2.4%
	55-64	63,691	18.9%	68,436	20.1%	7.5%	73,292	21.2%	15.1%	71,265	20.4%	11.9%	67,344	19.1%	5.7%
	18-64 Total	337,174		340,725		1.1%	344,908		2.3%	348,758		3.4%	352,112		4.4%

Source: www.pansi.org.uk

Figures for ASD for those aged 65+ are not available.

Figure 5 shows the predicted increase in ASD from 2017 to 2035 for those people aged 55-64. ASD in Shropshire is predicted to rise by 0.3% in 2035 compared to England at 0.2%.

Figure 3 Predicted 3-year rolling trend for ASD in Shropshire County and England for those aged 55-64



Source: www.pansi.org.uk

ⁱ British Institute of Learning Disability, Factsheet – what is learning disability? January 2004, www.bild.org.uk

ⁱⁱ National Autistic Society, Factsheet – What is Autism? 3 June 2015

ⁱⁱⁱ www.autism-alliance.org. Facts and figures 2017

Research published by Emerson and Baines in 2010. The adult prevalence study, The NHS Information Centre, Community and Mental Health Team, Brugha et al.(2012)

Public Health Intelligence Team
July 2017