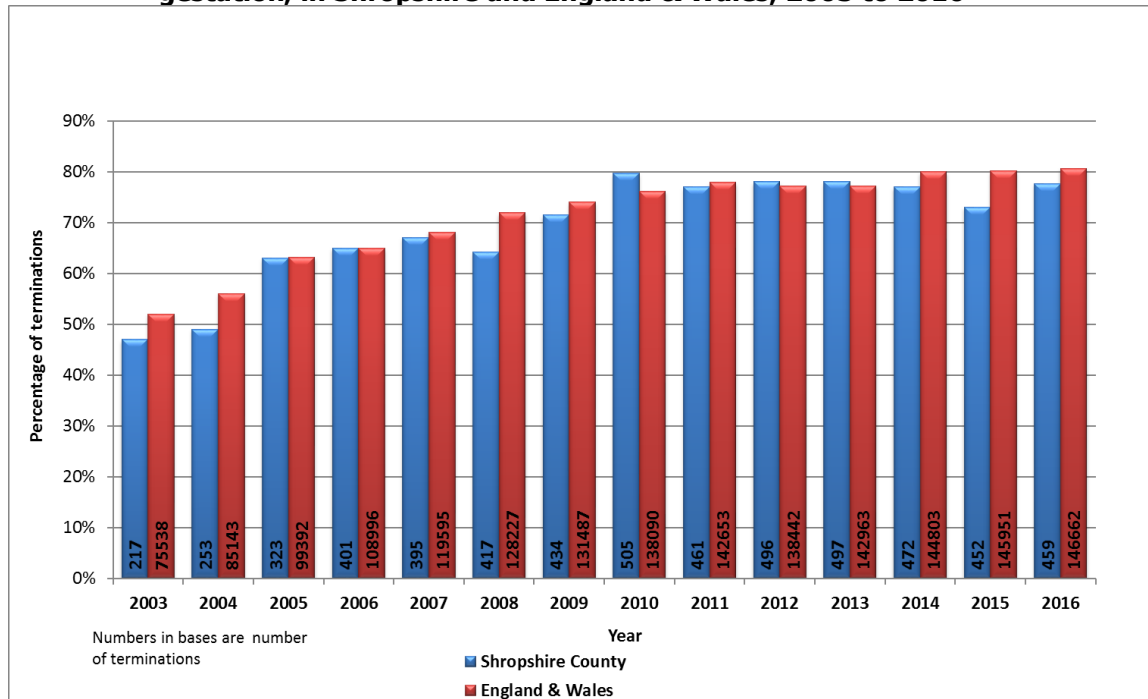


## REPORT ON SHROPSHIRE COUNTY TERMINATION RATES 2003-2016

This document reports on termination activity in Shropshire County compared to England & Wales from 2003 to 2016 and relates to NHS funded terminations. The data provided by the Office for National Statistics is presently available up to 2016.

**Figure 1: Percentage of NHS-funded terminations that occur before 10 weeks' gestation, in Shropshire and England & Wales, 2003 to 2016**

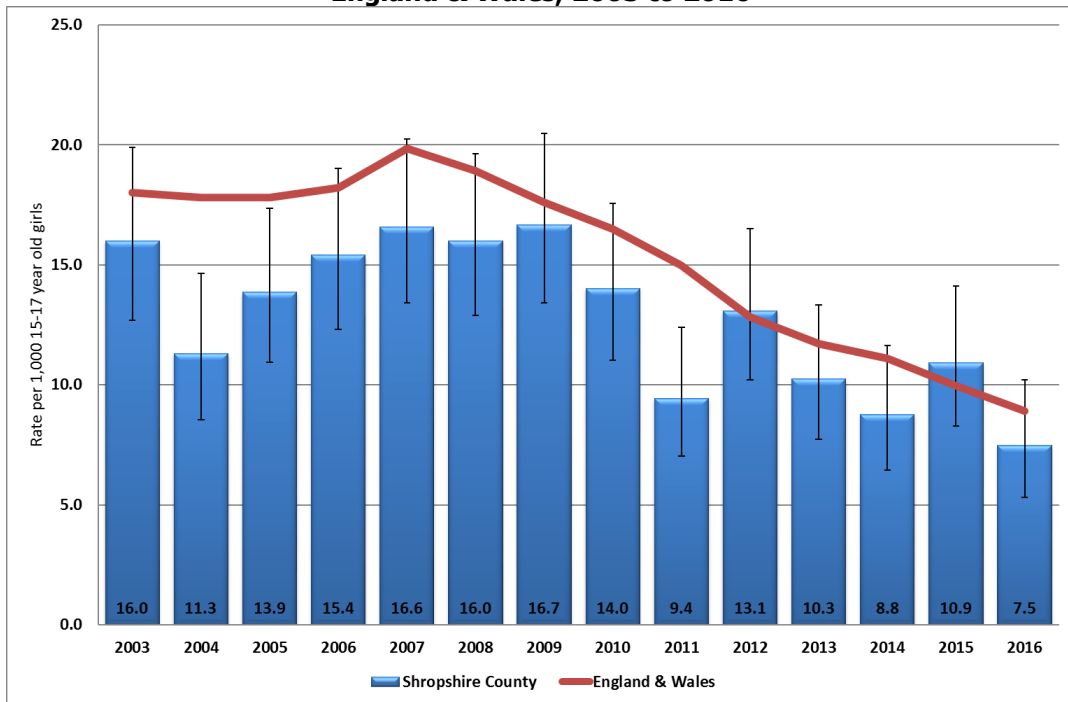


Source: Abortion Statistics and Teenage Pregnancy Unit, Crown copyright

NHS funded terminations increased in Shropshire County from 47% in 2003 to 77.7% in 2016; an increase of 4.7% compared to 2015. Shropshire was below the England & Wales average in 2016.

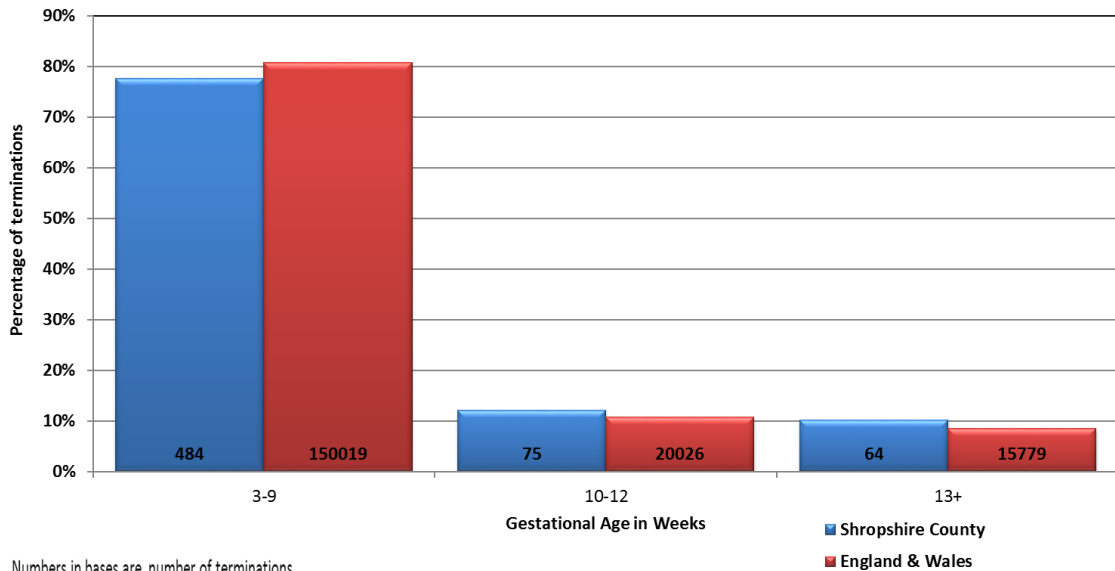
Figure 2 shows that the Shropshire termination rates in 2016 were significantly lower in 15-17 year-old girls compared to 2003; however rates decreased in 2016 compared to 2015 but this was not significant and were similar to England.

**Figure 2: Termination rates in 15 to 17 year old girls in Shropshire County and England & Wales, 2003 to 2016**



Source: Abortion Statistics and Teenage Pregnancy Unit, Crown copyright

**Figure 3: Percentage of terminations by gestational age in Shropshire and England & Wales in 2016**

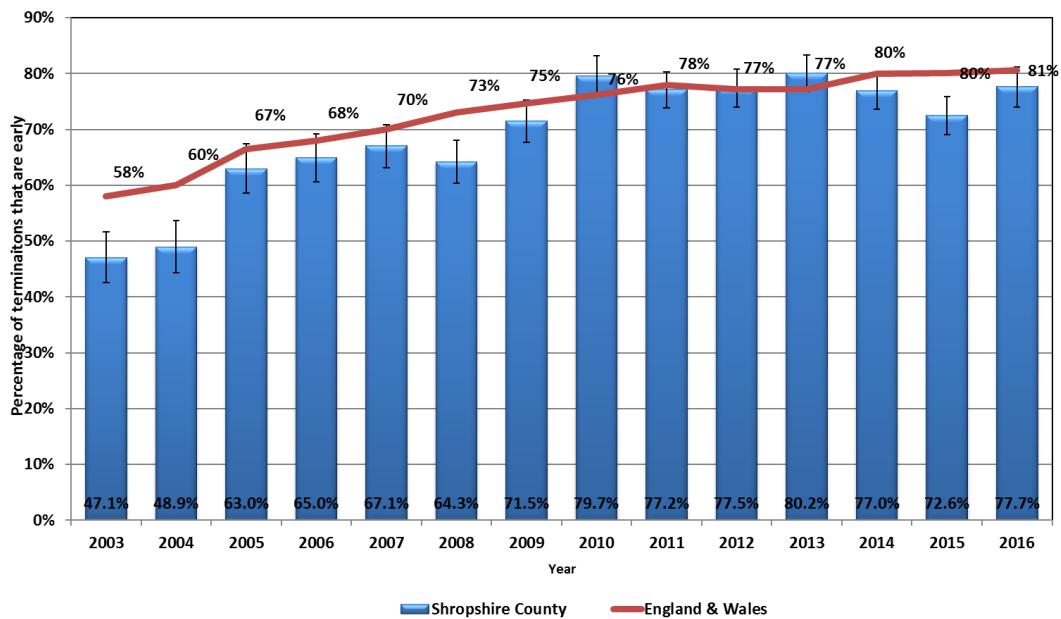


Numbers in bases are number of terminations

Source: Abortion Statistics and Teenage Pregnancy Unit, Crown copyright

Figure 3 shows that 78% of Shropshire County terminations were under the 10-week gestational age and that Shropshire was 3% below the England & Wales average; this represents a 5% increase compared to 2015. 12% of Shropshire County terminations were between 10-12 weeks – a decrease of 4% compared to 2015 and 10% over 13 weeks which was a 1% decrease compared to 2015. Shropshire was above the England and Wales average for both 10-12 and 13+ gestational ages.

**Figure 4: Proportion of NHS-funded terminations that are undertaken early (9 weeks' or less gestation), in Shropshire County compared to England & Wales between 2003 and 2016**

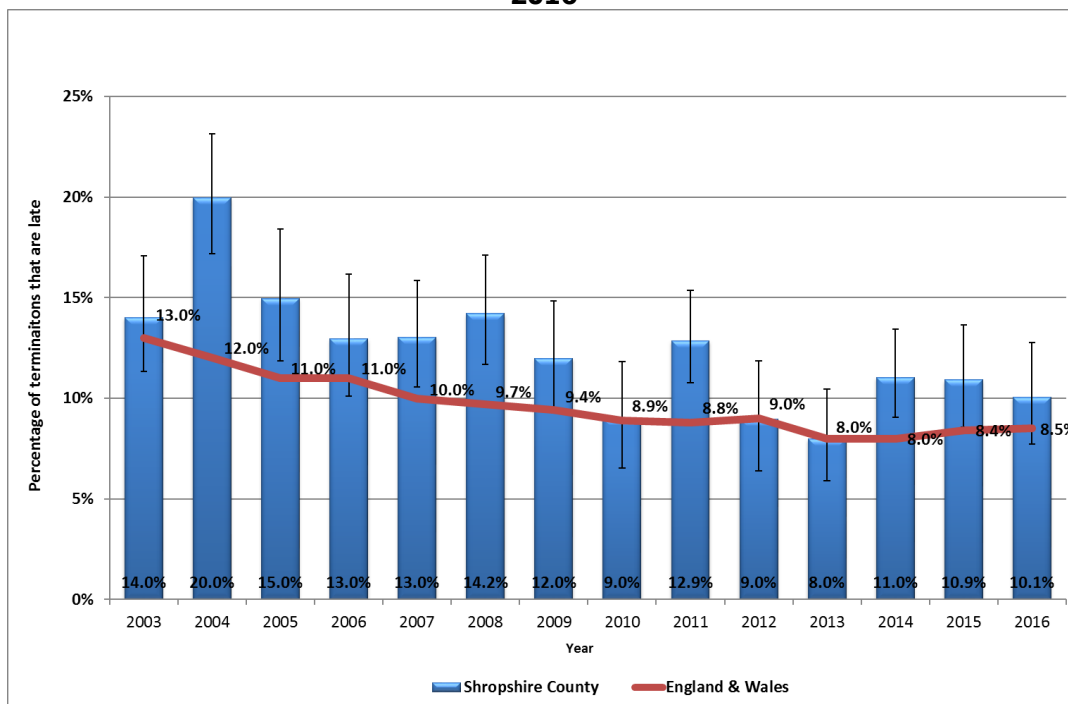


Source: Abortion Statistics and Teenage Pregnancy Unit, Crown copyright

The percentage of early terminations (<9 weeks) undertaken in Shropshire increased from 47.1% in 2003 to 77.7% in 2016 and increased by 5.1% between 2015 and 2016. Shropshire County rate of terminations in 2016 were similar to the England & Wales average.

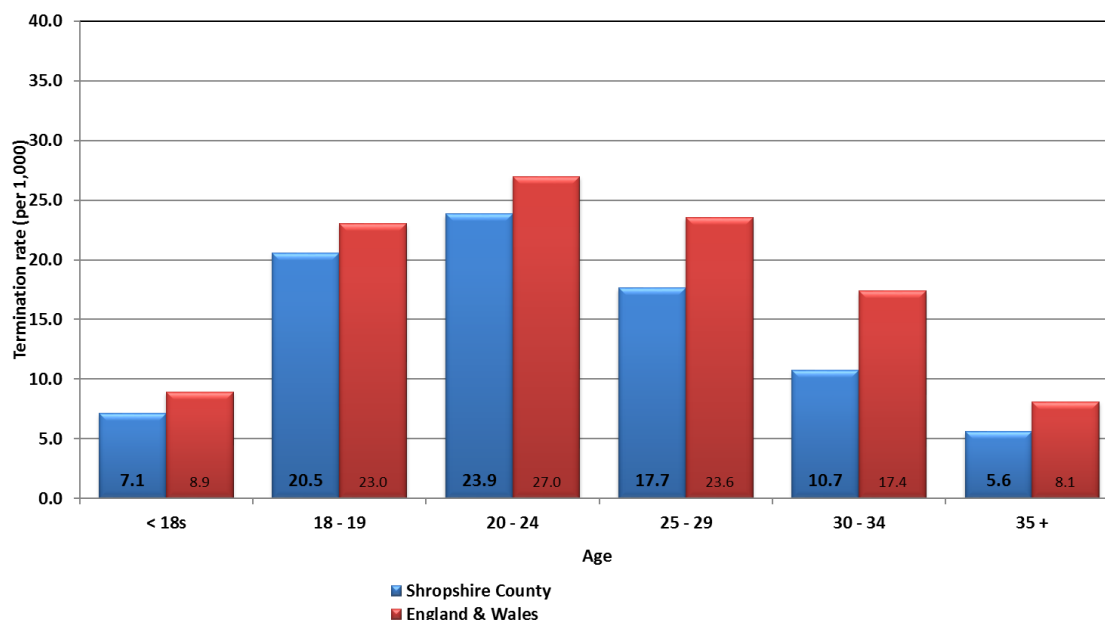
The general trend for late terminations (>13 weeks) in Shropshire County has been falling since 2003 with a decrease of 3.9% by 2016. There was a 0.8% decrease in >13 weeks terminations in Shropshire between 2015 and 2016 which was not significant but was higher than the England & Wales average of 8.5%.

**Figure 5: Proportion of all terminations that are undertaken late (13 weeks' gestation and over), in Shropshire County compared to England & Wales, 2003 to 2016**



Source: Abortion Statistics and Teenage Pregnancy Unit, Crown copyright

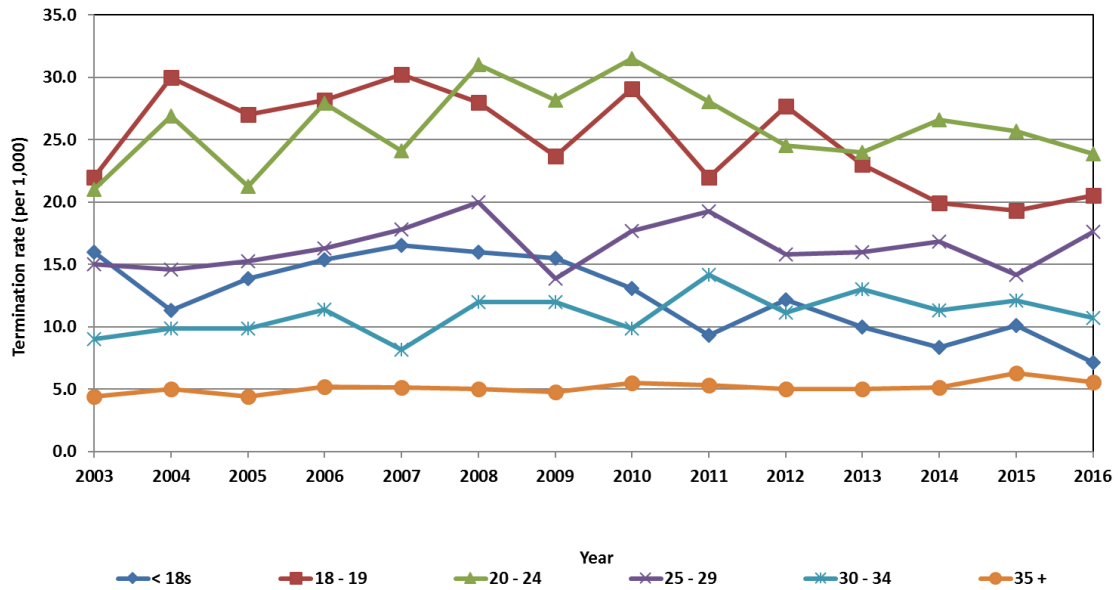
**Figure 6: Termination rates by woman's age in Shropshire and England & Wales, in 2016**



Source: Abortion Statistics and Teenage Pregnancy Unit, Crown copyright

In 2016 the highest rate of terminations for women in Shropshire County was in the 20-24 age group which was also reflected in the England & Wales rate; however Shropshire County was below the England & Wales average in all age groups.

**Figure 7: All termination rates by woman's age in Shropshire, 2003-16**



Source: Abortion Statistics and Teenage Pregnancy Unit, Crown copyright

From 2003 to 2016 the general trends show a gradual decrease in termination rates in the under 20 age bands and an increase in the 20-24, 25-29, 30-34 and 35+ age bands.

## Summary

- There was an increase in the percentage of terminations 2003 to 2016 and an increase of 4.7% in 2016 compared to 2015. Shropshire was below the England & Wales average in 2016.
- Significant decrease in termination rates from 2003 to 2016 in women aged 15-17; Shropshire was similar to the England & Wales average in 2016.
- 78% of Shropshire County terminations were undertaken at less than 10-weeks gestation, which was below the England & Wales average. Late terminations (>13 weeks) have decreased by 0.8% in 2016 compared to 2015 and was similar to the England & Wales average.
- There has been a gradual increase in early NHS-funded terminations (less than 9-weeks gestation) in Shropshire County from 2003 to 2016, with a 5.1% increase in 2016 compared to 2015 and was similar to the England & Wales average.
- The overall trend for late terminations (more than 13 weeks gestation) has been falling since 2003 to 2016, with a 0.8% decrease in late terminations in 2016 compared to 2015 and was higher than the England & Wales average.

- In 2016 women aged 20-24 had the highest percentage of terminations in Shropshire County. The lowest termination rates were for those women aged 35 and over; all age bands were below the England & Wales average.
- From 2003 to 2016 the general trends show a gradual decrease in termination rates in the under 20 age bands; particularly within the under 18 group which has fallen by 8.9% since 2003, whilst the percentages in age bands of 20+ increased on average by 2.1% since 2003.